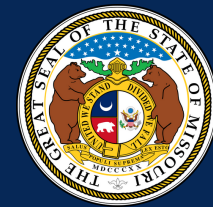


# IMPROVE I-70



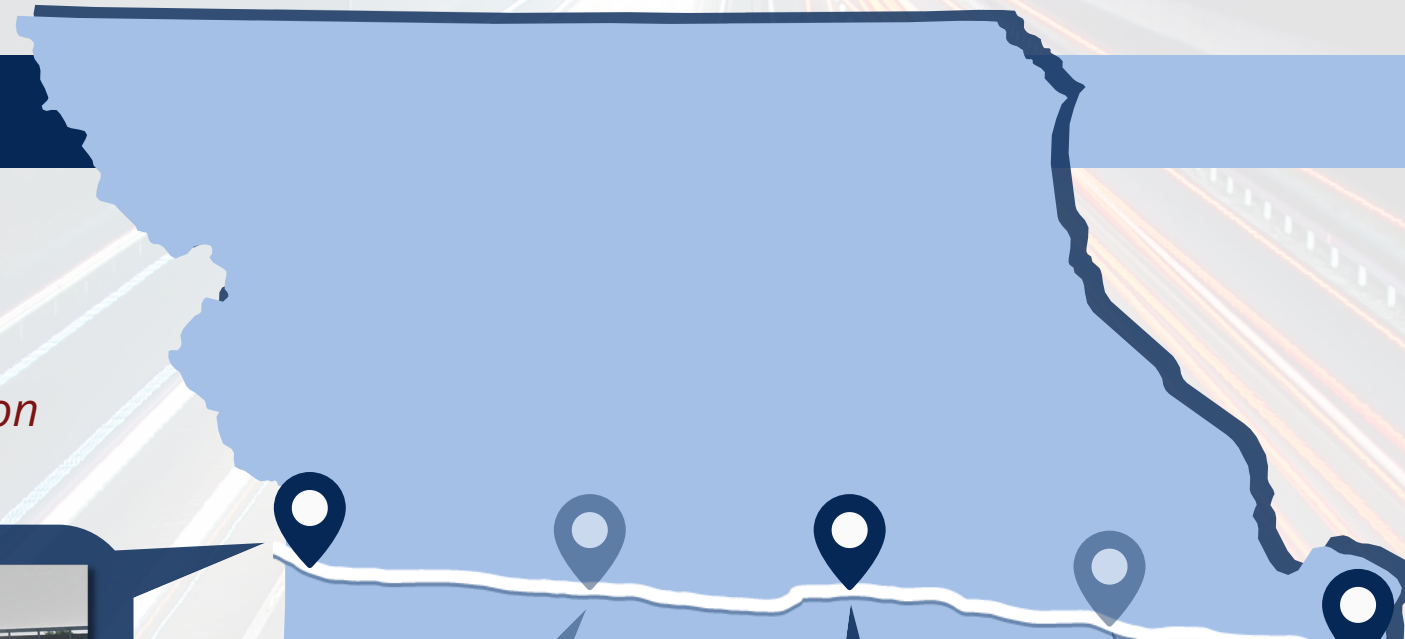
MAY 2023

## Needed Capacity Improvements Blue Springs to Wentzville

- ▲ Awarded - \$271 million
- ▲ STIP Funded - \$236 million
- ▲ General Revenue - \$2.8 billion

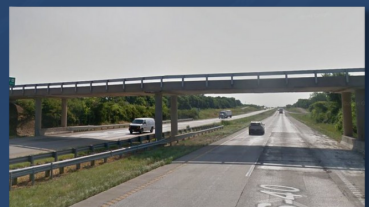
## Additional Capacity Improvements Kansas City and St. Louis

- ▲ Awarded - \$709 million
- ▲ STIP Funded - \$274 million



### Kansas City

- ▲ \$257 million  
*Buck O'Neil Bridge*
- ▲ \$145 million  
*Paseo to I-435*
- ▲ \$6 million  
*Blue Ridge Boulevard*



### Kansas City Suburban

*Blue Springs to Odessa  
19 miles*

- ▲ \$0
- ▲ \$6 million
- ▲ \$233 million



### Western Rural

*Odessa to Midway  
83 miles*

- ▲ \$240 million  
*Rocheport Bridge*
- ▲ \$0
- ▲ \$1.1 billion



### Columbia

*Midway to Route Z  
13 miles*

- ▲ \$0
- ▲ \$185 million
- ▲ \$410 million



### Eastern Rural

*Route Z to Warrenton  
60 miles*

- ▲ \$31 million
- ▲ \$13 million
- ▲ \$796 million



### St. Louis Suburban

*Warrenton to Wentzville  
20 miles*

- ▲ \$0
- ▲ \$32 million
- ▲ \$216 million



### St. Louis

- ▲ \$278 million  
*I-270*
- ▲ \$112 million  
*Chain of Rocks*
- ▲ \$62 million  
*Cave Springs to Fairgrounds*
- ▲ \$77 million  
*I-70/I-64*
- ▲ \$46 million  
*I-70/U.S. 67*

- Environmental near completion
- **1.1 million jobs** depend on I-70
- Workforce development opportunities
- I-70 carries **100 million tons of freight**

[modot.org/improveI70](https://modot.org/improveI70)



# IMPROVE I-70

## KANSAS CITY

**Buck O'Neil Bridge:** ([modot.org/buck-oneil-bridge-design-build-project](https://modot.org/buck-oneil-bridge-design-build-project))

- **Awarded:** \$257 million

**Paseo to I-435:** ([modot.org/improvei70kc](https://modot.org/improvei70kc)):

- **STIP Funded:** \$145 million

**Blue Ridge Boulevard:** ([modot.org/blue-ridge-boulevard-bridge-replacement-over-i-70-jackson-county](https://modot.org/blue-ridge-boulevard-bridge-replacement-over-i-70-jackson-county))

- **STIP Funded:** \$6 million

## KANSAS CITY SUBURBAN

*Cost Breakdown:*

**Awarded:** N/A

**STIP Funded:** \$6 million

- Bridge replacements at Rte. AA and Rte. BB

**General Revenue:** \$233 million

- Add a lane in both directions for 19 miles
- Reconstruct existing pavement
- Construct new bridges
- Reconfigure interchanges

Average Daily Traffic: 44,600

## WESTERN RURAL

*Cost Breakdown:*

**Awarded:** \$240 million

- Rocheport Bridge Project
  - [modot.org/RocheportBridge](https://modot.org/RocheportBridge)

**STIP Funded:** N/A

**General Revenue:** \$1.1 billion

- Add a lane in both directions for 83 miles
- Reconstruct existing pavement
- Construct new bridges
- Reconfigure interchanges

Average Daily Traffic: 29,700

## COLUMBIA

*Cost Breakdown:*

**Awarded:** N/A

**STIP Funded:** \$185 million

- I-70/U.S. Route 63 interchange improvements
  - [modot.org/improvei70Columbia](https://modot.org/improvei70Columbia)
- Pavement improvements within Columbia

**General Revenue:** \$410 million

- Add a lane in both directions for 13 miles
- Reconstruct existing pavement
- Construct new bridges
- Reconfigure interchanges

Average Daily Traffic: 50,100

## EASTERN RURAL

*Cost Breakdown:*

**Awarded:** \$31 million

- Mineola Hill Climbing Lanes
  - [modot.org/mineola-hill-climbing-lanes-design-build-completed](https://modot.org/mineola-hill-climbing-lanes-design-build-completed)
- Route 19 bridge replacements and interchange improvement over I-70
  - [modot.org/missouri-route-19-bridge-replacement-and-interchange-improvement-over-i-70](https://modot.org/missouri-route-19-bridge-replacement-and-interchange-improvement-over-i-70)

**STIP Funded:** \$13 million

- I-70/U.S. Route 54 interchange improvements in Kingdom City
  - [modot.org/KingdomCityInterchange](https://modot.org/KingdomCityInterchange)

**General Revenue:** \$796 million

- Add a lane in both directions for 60 miles
- Reconstruct existing pavement
- Construct new bridges
- Reconfigure interchanges

Average Daily Traffic: 36,100

## ST. LOUIS SUBURBAN

*Cost Breakdown:*

**Awarded:** N/A

**STIP Funded:** \$32 million

- Road realignment from Wentzville Parkway to west of I-64/Rte. 61
  - [modot.org/i-70-improvements-wentzville-parkway-route-z](https://modot.org/i-70-improvements-wentzville-parkway-route-z)

**General Revenue:** \$216 million

- Add a lane in both directions for 20 miles
- Reconstruct existing pavement
- Construct new bridges
- Reconfigure interchanges

Average Daily Traffic: 81,700

## ST. LOUIS

**I-270:** ([i270north.org](https://i270north.org)):

- **Awarded:** \$278 million

**Cave Springs to Fairgrounds:** ([i70csfg.com](https://i70csfg.com)):

- **Awarded:** \$62 million

**Chain of Rocks:** ([idot.illinois.gov/projects/i-270-over-the-mississippi-river](https://idot.illinois.gov/projects/i-270-over-the-mississippi-river)):

- **Awarded:** \$112 million

- I-270 and Riverview Drive interchange ([modot.org/i-270-and-riverview-drive-interchange-project](https://modot.org/i-270-and-riverview-drive-interchange-project))

**I-70/I-64:** ([modot.org/i-64i-70route-4061-interchange](https://modot.org/i-64i-70route-4061-interchange)):

- **STIP Funded:** \$77 million

**I-70/U.S. Route 67:**

- **STIP Funded:** \$46 million